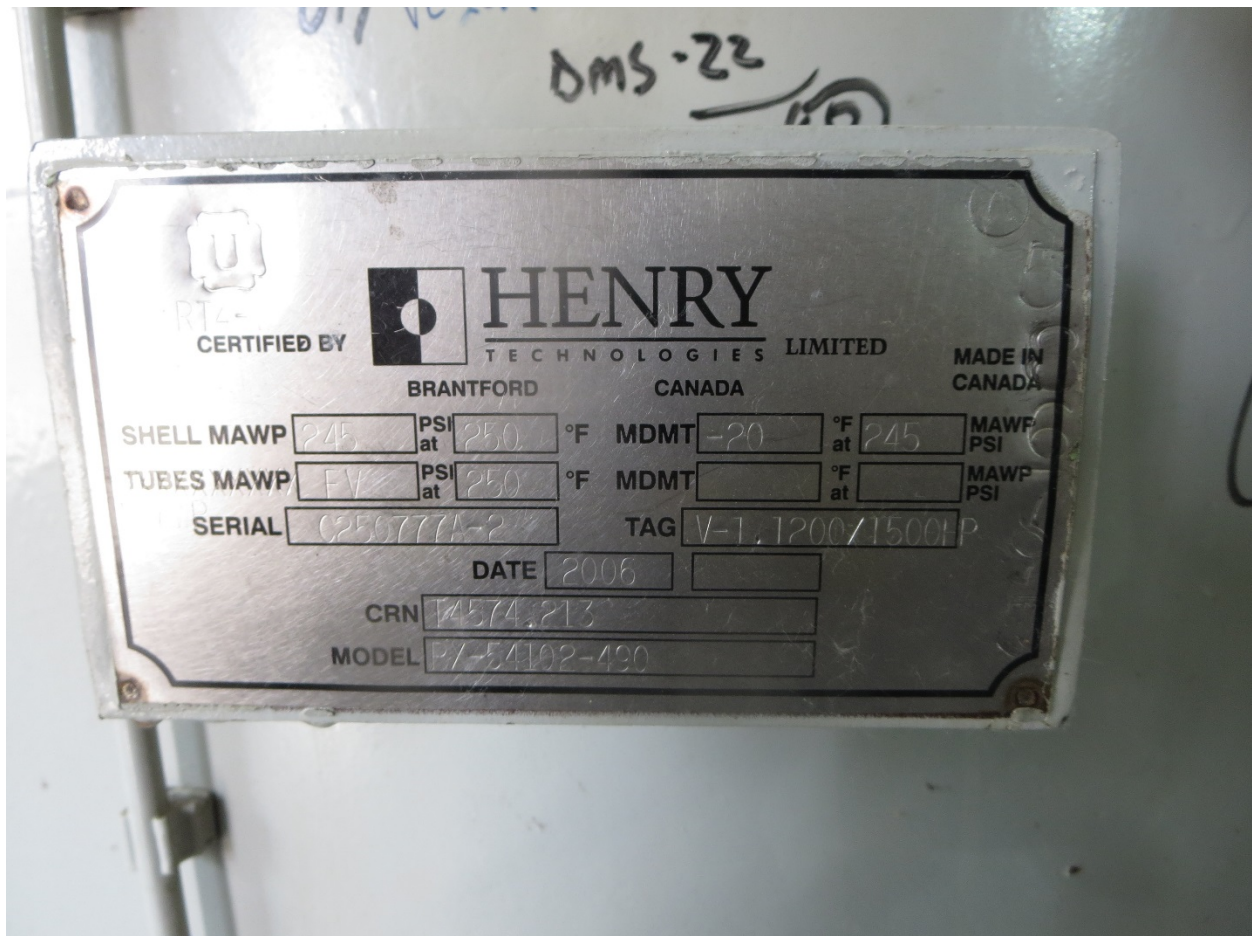
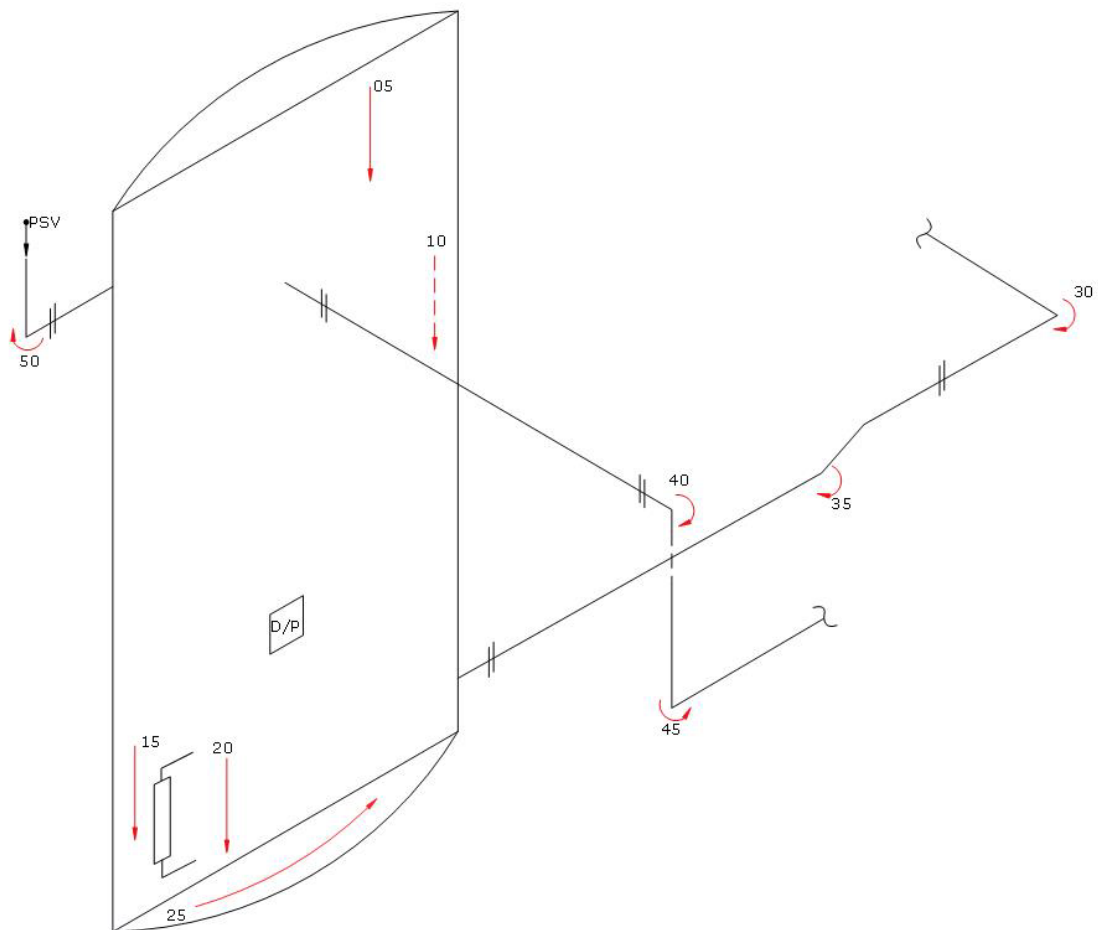


Location Name:	ANSELL GAS PLANT	LSD:	07-27-051-19W5
A#:	A0586795	Equipment/Tag No.	V-1
Equipment Description:	SUCTION SCRUBBER	Serial Number:	C250777A-2
		CRN: (or other ID#)	T4574.213
MAWP:	245 PSI	Design Temp:	250°F
Shell Material:	SA-516-70	Head Material:	SA-516-70
Shell Thickness:	0.625"	Head Thickness:	0.5625"
Corrosion Allowance:	0.0625"	Date Built:	2006
Size:	48"	Manufacturer:	HENRY

Notes:







Ultrasonic Corrosion Survey

Survey Name: Husky Energy

Date: Jul 10, 2014

Inspector: C. Graham

LSD: 07-27-051-19W5 Area: Ansell Location: Gas Plant
A #: A0586795 Tag Number: V-1 Vessel Name: Suction Scrubber
CRN: T4574.213 Year Built: 2006 Serial Number: C250777A-2
Vessel CA: 1.5875 mm Manufacturer: Henry
Shell MAWP: 245psi MAWTF: 250°F Tube MAWP: MAWTF:

TML Description		Baseline				Material:	SA-516-70
05	Shell	2014	Flag	CA	Nominal	T Min	Corr. Rate
Shape:	Cylindrical	Min	16.310	14.288	1.588	15.875	
OD:	48"	Avg	16.430				Remaining Life:
Spec:	ASME VIII Div.1	Comments:					Retirement Date:

TML Description		Baseline				Material:	SA-516-70
10	Shell	2014	Flag	CA	Nominal	T Min	Corr. Rate
Shape:	Cylindrical	Min	15.880	14.288	1.588	15.875	
OD:	48"	Avg	16.000				Remaining Life:
Spec:	ASME VIII Div.1	Comments:					Retirement Date:

TML Description		Baseline				Material:	SA-516-70
15	Shell	2014	Flag	CA	Nominal	T Min	Corr. Rate
Shape:	Cylindrical	Min	15.750	14.288	1.588	15.875	
OD:	48"	Avg	15.980				Remaining Life:
Spec:	ASME VIII Div.1	Comments:					Retirement Date:

TML Description		Baseline				Material:	SA-516-70
20	Shell	2014	Flag	CA	Nominal	T Min	Corr. Rate
Shape:	Cylindrical	Min	15.290	14.288	1.588	15.875	
OD:	48"	Avg	16.100				Remaining Life:
Spec:	ASME VIII Div.1	Comments:					Retirement Date:



Ultrasonic Corrosion Survey

Survey Name: Husky Energy

Date: Jul 10, 2014

Inspector: C. Graham

LSD: 07-27-051-19W5 Area: Ansell Location: Gas Plant
A #: A0586795 Tag Number: V-1 Vessel Name: Suction Scrubber
CRN: T4574.213 Year Built: 2006 Serial Number: C250777A-2
Vessel CA: 1.5875 mm Manufacturer: Henry
Shell MAWP: 245psi MAWTF: 250°F Tube MAWP: MAWTF:

TML Description		Baseline				Material:	SA-516-70
25	Head	2014	Flag	CA	Nominal	T Min	Corr. Rate
Shape:	Ellipsoidal	Min	15.390	12.700	1.588	14.288	
OD:	48"	Avg	15.720				Remaining Life:
Spec:	ASME VIII Div.1	Comments:					Retirement Date:

TML Description		Baseline				Material:	A-234-WPB
30	Piping	2014	Flag	CA	Nominal	T Min	Corr. Rate
Shape:	90° Elbow	Min	8.860	8.334	1.191	9.525	
OD:	12.75"	Avg	9.350				Remaining Life:
Spec:	ASME B31.3	Comments:					Retirement Date:

TML Description		Baseline				Material:	A-234-WPB
35	Piping	2014	Flag	CA	Nominal	T Min	Corr. Rate
Shape:	45° Elbow	Min	9.350	8.334	1.191	9.525	
OD:	12.75"	Avg	9.600				Remaining Life:
Spec:	ASME B31.3	Comments:					Retirement Date:

TML Description		Baseline				Material:	A-234-WPB
40	Piping	2014	Flag	CA	Nominal	T Min	Corr. Rate
Shape:	90° Elbow	Min	8.790	8.112	1.159	9.271	
OD:	10.75"	Avg	9.400				Remaining Life:
Spec:	ASME B31.3	Comments:					Retirement Date:

FORM U-1A MANUFACTURER'S DATA REPORT FOR PRESSURE VESSELS
(Alternative Form for Single Chamber, Completely Shop or Field Fabricated Vessels Only)
As Required by the Provisions of the ASME Code Rules, Section VIII, Division 1

CUST. P.O.: 188788

1. Manufactured and certified by HENRY TECHNOLOGIES LIMITED, 36 CRAIG STREET BRANTFORD, ONTARIO CANADA N3T 5T6
(Name and address of manufacturer)

2. Manufactured for TOROMONT PROCESS SYSTEMS, 3615-34th St. N.E., Calgary, AB T1Y 6Z8
(Name and address of purchaser)

3. Location of installation UNKNOWN
(Name and address)

4. Type: VERTICAL C250777A-2 T4574.213 R250777A-1 N/A 2006
(Horiz. or vert. tank) (Mfr's serial No.) (CRN) (Drawing no.) (Nat'l Bd. No.) (Year built)

5. The chemical and physical properties of all parts meet the requirements of material specifications of the ASME BOILER AND PRESSURE VESSEL CODE. The design, construction, and workmanship conform to ASME Rules, Section VIII, Division 1 2004
Year

to 1518-5
Addenda (Date) Code Case Nos. Special Service per UG 120(d)

6. Shell: SA 516 70 5/8" 1/16" 54" ID. 102"
Mat'l (Spec. No., Grade) Nom. Thk. (in.) Corr. Allow. (in.) Diam. I.D. (ft. & in.) Length (overall) (ft. & in.)

7. Seams: SNGL/BUTT SPOT 85% - - SNGL/BUTT SPOT, 100% 1
Long. (Welded, Dbl., Sngl., Lap, Butt) R.T. (Spot or Full) Eff. (%) H.T. Temp. (°F) Time (hr) Girth (Welded, Dbl., Sngl., Lap, Butt) R.T. (Spot, Eff. (%) or Full) No. of Courses

8. Heads: (a) Mat'l. SA 516 70 (b) Mat'l. SA 516 70
(Spec No., Grade) (Spec No., Grade)

	Location (Top, Bottom, Ends)	Minimum Thickness	Corrosion Allowance	Crown Radius	Knuckle Radius	Elliptical Ratio	Conical Apex Angle	Hemispherical Radius	Flat Diameter	Side to Pressure (Convex or Concave)
(a)	TOP	0.5625"	1/16"	-	-	2:1	-	-	-	CONCAVE
(b)	BOTTOM	0.5625"	1/16"	-	-	2:1	-	-	-	CONCAVE

If removable, bolts used (describe other fastenings) -
(Mat'l, Spec. No., Gr., Size, No.)

9. MAWP 245 FV psi at max. temp. 250 250 °F
(internal) (external) (internal) (external)
Min. design metal temp. -20 °F at 245 psi. Hydro. pneu., 270 test pressure 270 psi.

10. Nozzles, inspection and safety valve openings:

Purpose (Inlet, Outlet, Drain)	No.	Diam. or Size	Type	Mat'l.	Nom. Thk.	Reinforcement Mat'l.	How Attached	Location
CONN.	2	12"	WE.	SA-106 GR B	SCH.80	SA-516 Gr 70	WELDED	SIDE
CONN.	1	3"	WE.	SA-106 GR B	SCH.160	-	WELDED	SIDE
CONN.	1	2"	WE.	SA-106 GR B	SCH.160	-	WELDED	BOTTOM
CONN.	2	2"	CPLG.	SA 105N	6000LB.	-	WELDED	SIDE
CONN.	1	1-1/2"	CPLG.	SA 105N	6000LB.	-	WELDED	SIDE
CONN.	2	1"	CPLG.	SA 105N	6000LB.	-	WELDED	SIDE
CONN.	6	3/4"	CPLG.	SA 105N	6000LB.	-	WELDED	SIDE / BTM
INSP. OPENING	1	20"	WE.	SA-106 GR B	SCH.40	SA-516 Gr 70	WELDED	TOP

11. Supports: Skirt NO Lugs 2 Legs - Other PAD (2), BRACKETS (3) Attached TOP/BTM/WELDED
(Yes or no) (No.) (No.) (Describe) (Where and how)

12. Remarks: Manufacturer's Partial Data Reports properly identified and signed by Commissioned Inspectors have been furnished for the following items of the report: -

(Name of part, item number, Mfr's name and identifying stamp)

IMPACT TEST EXEMPT PER UCS-66

VESSEL MEETS RT-4 REQUIREMENTS

HEADS ARE HOT FORMED

CERTIFICATE OF SHOP / FIELD COMPLIANCE

We certify that the statements made in this report are correct and that all details of design, material, construction, and workmanship of this vessel conform to the ASME Code for Pressure Vessels, Section VIII, Division 1. "U" Certificate of Authorization No. 29646

expires Jun-5-2006

Date May 16/06 Co. Name HENRY TECHNOLOGIES LIMITED Signed [Signature]
(Manufacturer) (Representative)

CERTIFICATE OF SHOP / FIELD INSPECTION

Vessel constructed by HENRY TECHNOLOGIES LIMITED at 36 CRAIG STREET BRANTFORD, ONTARIO CANADA N3T 5T6

I, the undersigned, holding a valid commission issued by The National Board of Boiler and Pressure Vessel Inspectors and the State or Province of ONTARIO and employed by T.S.S.A.

have inspected the component described in this Manufacturer's Data Report on MAY 16, 2006, and state that, to the best of my knowledge and belief, the Manufacturer has constructed this pressure vessel in accordance with ASME Code, Section VIII, Division 1.

By signing this certificate neither the Inspector nor his employer makes any warranty, expressed or implied, concerning the pressure vessel described in this Manufacturer's Data Report. Furthermore, neither the Inspector nor his employer shall be liable in any manner for any personal injury or property damage or a loss of any kind arising from or connected with this inspection.

Date MAY 16/06 Signed [Signature] Commissions ON 49
(Authorized Inspector) (Nat'l Board, (incl. endorsements) State, Prov. and No.)