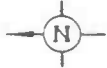
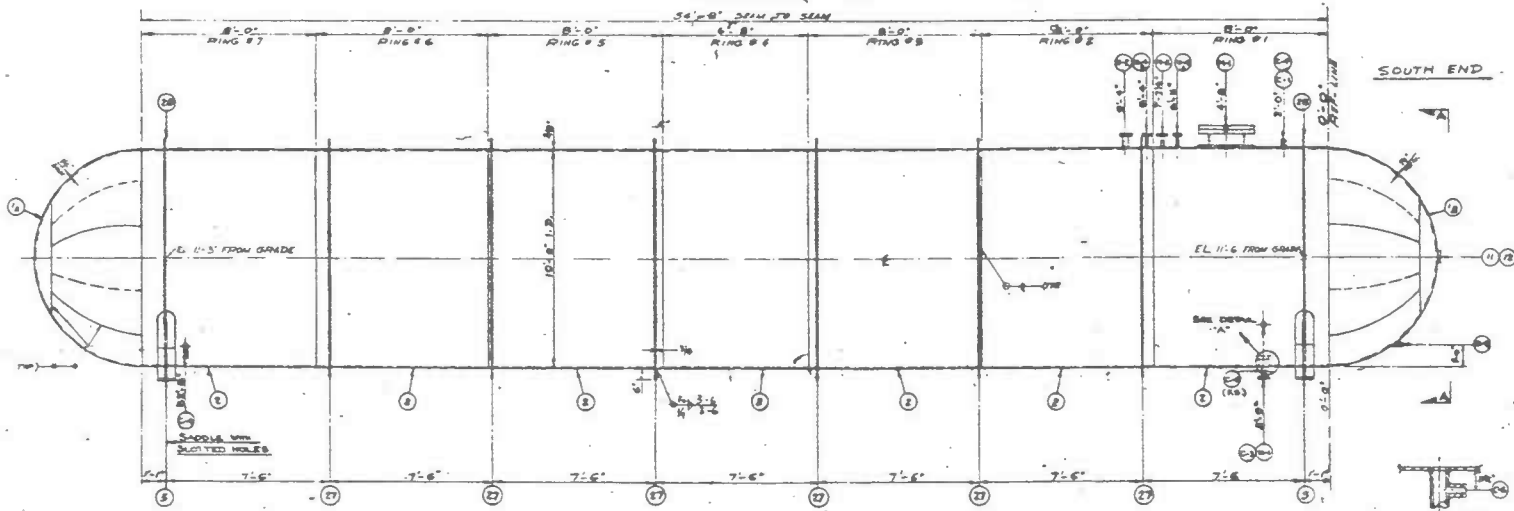


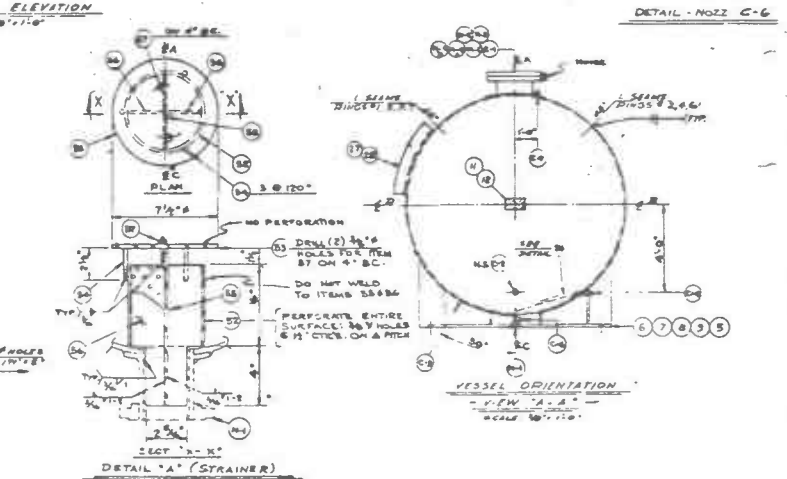
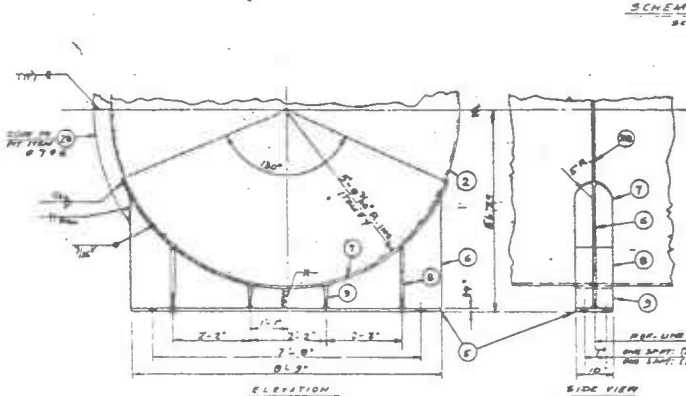
RECEIVED
POST 27



ITEM NO.	QTY	DESCRIPTION	UNIT	REMARKS
1	1	150° RF. MANWAY FABC	A-518-708	13 1/2" x 10" x 1/2"
2	1	150° RF. OUTLET	A-518-B	3 1/2" x 3 1/2" x 1/2"
3	1	150° RF. R.S.V.	A-518-B	4 1/2" x 8" x 1/2"
4	1	150° RF. L.I.	A-518-B	1 1/2" x 8" x 1/2"
5	2	150° RF. L.I.	A-518-B	1 1/2" x 8" x 1/2"
6	1	6000# CPUG	A-105-E	3"
7	1	6000# CPUG	A-105-E	3"
8	1	6000# CPUG	A-105-E	3"
9	1	6000# CPUG	A-105-E	3"
10	1	6000# CPUG	A-105-E	3"
11	1	6000# CPUG	A-105-E	3"
12	1	6000# CPUG	A-105-E	3"

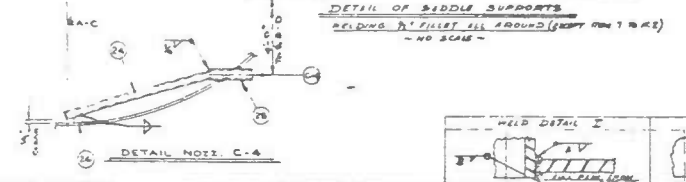


ITEM NO.	QTY	DESCRIPTION	UNIT	REMARKS
13	1	150° RF. MANWAY (ALTERNATE)	A-518-A	
14	1	150° RF. MANWAY	A-518-B	
15	1	150° RF. S.O. FLG.	A-518-C	
16	1	3" XHT SMLS PIPE x 6' L.O.	A-518-D	
17	1	6" XHT SMLS PIPE x 2' L.O.	A-518-E	
18	1	1 1/2" x 8" SMLS PIPE x 2' L.O.	A-518-F	
19	1	3" x 8" SMLS PIPE x 2' L.O.	A-518-G	
20	1	1 1/2" x 8" SMLS PIPE x 2' L.O.	A-518-H	
21	1	3" x 8" SMLS PIPE x 2' L.O.	A-518-I	
22	1	1 1/2" x 8" SMLS PIPE x 2' L.O.	A-518-J	
23	1	3" x 8" SMLS PIPE x 2' L.O.	A-518-K	
24	1	1 1/2" x 8" SMLS PIPE x 2' L.O.	A-518-L	
25	1	3" x 8" SMLS PIPE x 2' L.O.	A-518-M	
26	1	1 1/2" x 8" SMLS PIPE x 2' L.O.	A-518-N	
27	1	3" x 8" SMLS PIPE x 2' L.O.	A-518-O	
28	1	1 1/2" x 8" SMLS PIPE x 2' L.O.	A-518-P	



ADDITIONAL STAMPINGS
 (1) 150° RF. MANWAY
 (2) 150° RF. OUTLET
 (3) 150° RF. R.S.V.
 (4) 150° RF. L.I.
 (5) 6000# CPUG
 (6) 6000# CPUG
 (7) 6000# CPUG
 (8) 6000# CPUG
 (9) 6000# CPUG
 (10) 6000# CPUG

MAINT PLATE STAMPING
 SERIAL NO. 150-100
 DATE: 91-CL-6417 (B.S. 10)
 MAX. WT. 35,000 LB.
 DESIGN PRESSURE 150 PSIG
 DESIGN TEMPERATURE 150 °F
 CORROSION ALLOWANCE NONE
 STRESS RELIEF YES



GENERAL NOTES
 VESSEL TO BE CONSTRUCTED IN ACCORDANCE WITH THE 1968 ASME CODE SECT. VIII
 VESSEL TO BE INSPECTED BY THE PROVINCE GOVERNMENT 9011 INSPECTOR
 DESIGN PRESSURE 150 PSIG DESIGN TEMPERATURE 150 °F
 WIND TEST 6" x 8" x 1/2" TO BE SPLICED
 CORROSION ALLOWANCE NONE
 STRESS RELIEF YES

WT. FULL OF WATER 353,000 LB
EST. SHIPPING WEIGHT 35,700 LB
CAPACITY 8,000 CU FT

BLACK, SIVALL & BAYLON LTD.
 4001 BAYVIEW ST. SUITE 210
 SCAR. ONT. M1S 1T5
 91-a-6417

MM139-420-2