



25KV - Stationary Cable Reeler

Friction drive drum rotation – multiple drum capabilities - adjustable height level winding fairlead – 180 degree base rotation



Diesel / Hydraulic Power unit with remote control operation



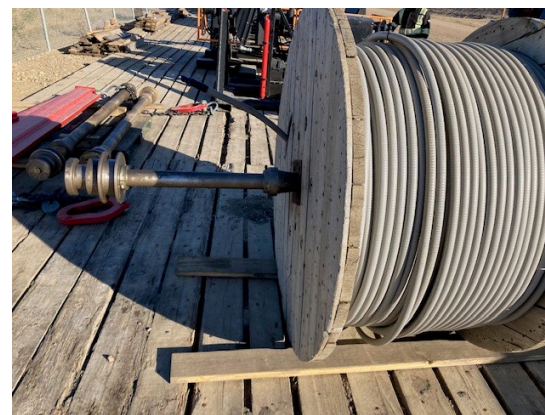
25KV - Stationary Cable Reeler



Handles cable drum from 2500lb / 48" diameter to 20,000lb / 108" diameter



Drum rotation shaft sized to suit c/w spreader bar to lift drum, power unit and cable reeler assembly



25KV - Stationary Cable Reeler



CUSTOMER SIGN-OFF DRAWING:

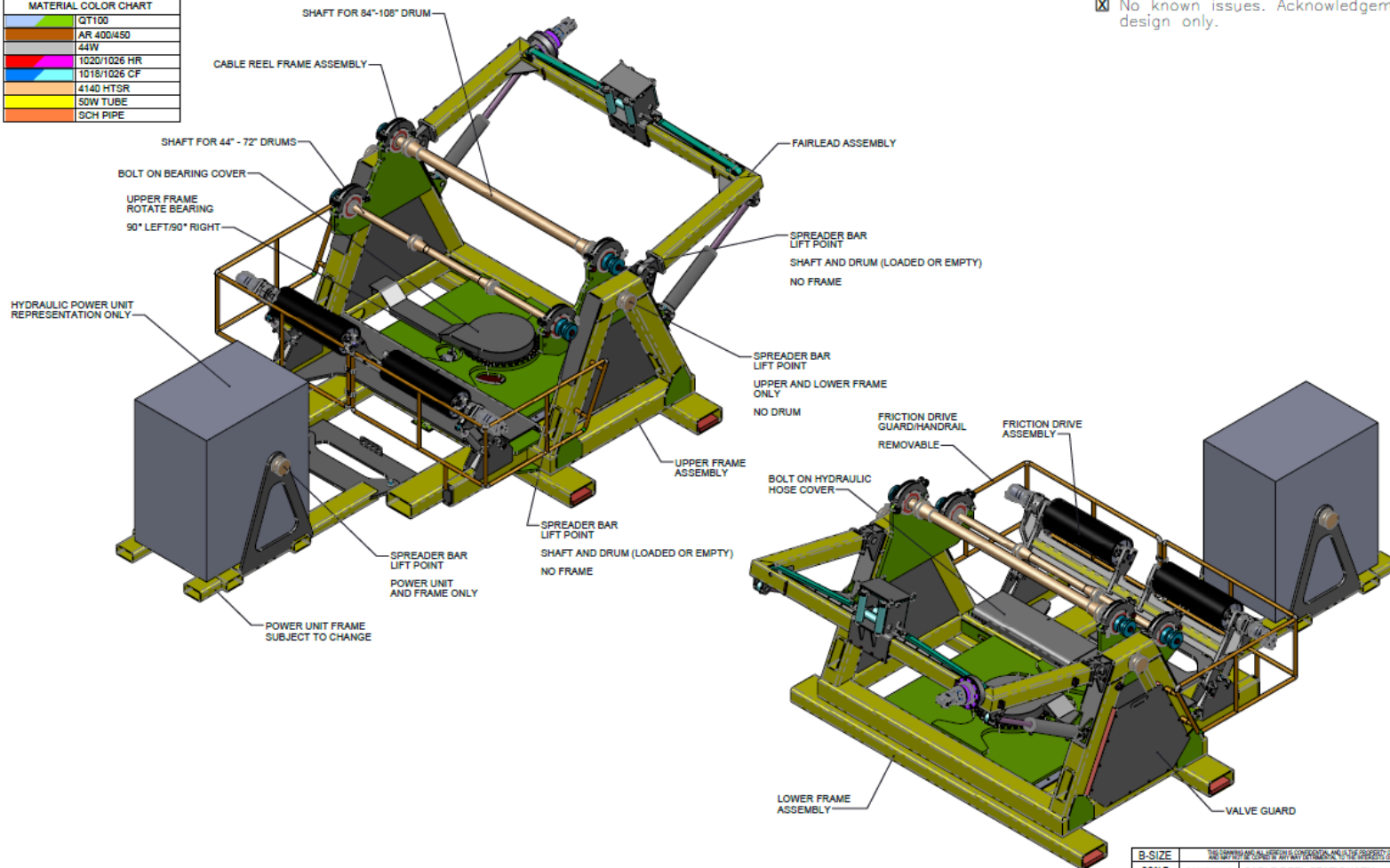
*Concept drawing below. Item may not be exactly as shown.

Weight: 16131 lbs.


Authorizing Signature: _____ Date: _____

☒ No known issues. Acknowledgement of concept or design only.

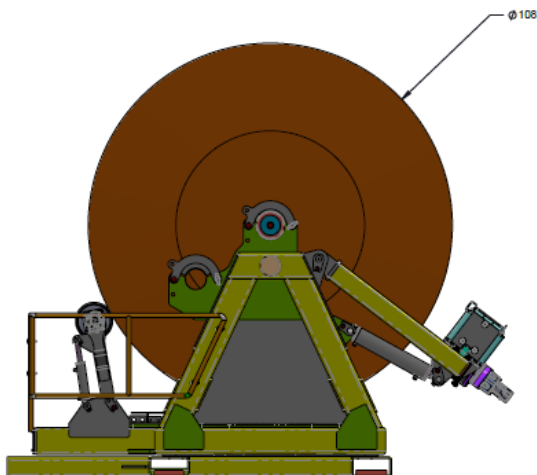
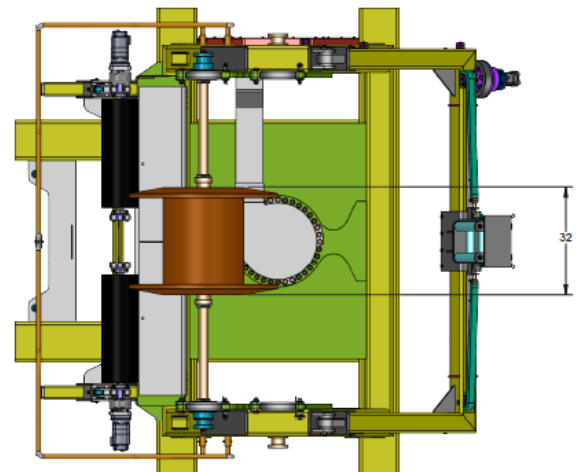
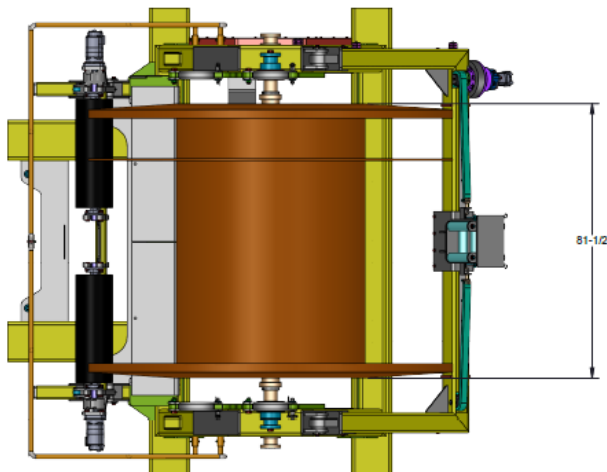
MATERIAL COLOR CHART	
QT100	
AR 400/450	
44W	
1020/1026 HR	
1018/1026 CF	
4140 HTSR	
50W TUBE	
SCH PIPE	



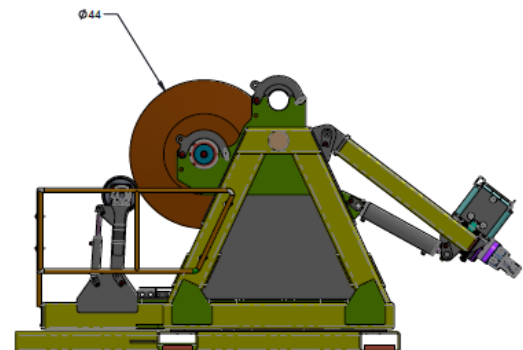
Quote or Reference #: 3S97579

B-SIZE		THIS DRAWING IS AN UNCONTROLLED COPY AND IS NOT TO BE USED FOR CONSTRUCTION OR FOR THE PURCHASE OF MATERIALS WITHOUT THE APPROVAL OF THE ORIGINAL DESIGNER.				
SCALE	DO NOT SCALE	CABLE REEL STATIONARY, 25KV, CABLE, W/ HYD POWER UNIT			REV	
SER NO	3W78729					
DATE	2019-09-06					
AUTHOR	CMKW	DRAWING AREA IN INCHES	STANDARD TOLERANCES	SHEET	DRAWING	REV
WEIGHT	16131 lbs.	10" & OVER	1/2" ± 0.030 1/4" ± 0.010 1/8" ± 0.005	(1 of 3)	122-805-0000	

25KV - Stationary Cable Reeler



WITH LARGE DRUM



WITH SMALL DRUM

ALL WELDS N/A FILLET E-70-WP UNLESS NOTED

B-SIZE		THE INFORMATION CONTAINED ON THIS DRAWING IS THE PROPERTY OF WELDED-DEALS INC.		WBM	
SCALE	DO NOT SCALE	CABLE REEL-STATIONARY,		WELDED-DEALS INC.	
SER NO	3W78729	25KV,CABLE,WHYD POWER UNIT		EUGEN, OREGON	
DATE	2019-09-06	-		LANGLEY - BARRIE	
AUTHOR	CMKW	DIMENSIONS ARE IN	STANDARD TOLERANCES	SHEET	DRAWING
WEIGHT	16131 lbs.	INCHES	1/16" ± 1/32"	(3 of 3)	122-805-0000
		WEIGHTS ARE IN	1/8" ± 1/16"		REV
		POUNDS	1/4" ± 1/8"		0



25KV - Stationary Cable Reeler

