

GENERAL PRESSURE VESSEL INFORMATION

District: **Wemby**

Skid No. **6126**

Facility: **Goodfare Field**

Location (LSD) **06-21-72-11 W6M**

Vessel Name & Equipment Number: **3 Phase Separator**

Orientation: **Vertical**

Status: **operating**

Regulatory Inspection

PRESSURE VESSEL NAMEPLATE DATA

"A" or "G" or "S" (Sask.) or BC Registration Number.
A# 455071

CRN Number
L-7115.2

Vessel serial number: **C9390.VS**

Size (diameter x length- estimate if necessary): **20 in.x 7 ft 6 in.**

Shell thickness: **26.2 mm**

Shell material: **SA 106 B**

Head thickness: **22.2 mm**

Head material: **SA 516 70**

Tube wall thickness:

Tube material:

Tube diameter:

Tube length:

Channel thickness:

Channel material:

Design pressure

Shell: **9928 Kpa**

Operating pressure

Shell:

Tubes:

Tubes:

Design Temp.

Shell: **54 C**

Operating temperature

Shell:

Tubes:

Tubes:

X-ray: **RT 2**

Heat treatment: **NO**

Code parameters: **ASME VIII**

Joint efficiency (if on nameplate):

Manufacturer: **RUSHTON**

Year built: **2000**

Corrosion allowance: **1.6 mm**

Manway? **No**

PRESSURE SAFETY VALVE NAMEPLATE DATA

Tag Number(s)	Set Pressure	CRN #	Manufacturer /Model /Serial # and Code Stamp	Capacity (Scfm)	Size	Set Date
Shell Side G#600570 ✓	1100 Psi	None	Wellmark/W9501RS-1600/40778/UV	2952 Scfm	1"x1"	Nov 02 IPV
Tube Side G#						

SERVICE CONDITIONS-INDICATE ALL THAT APPLY

Sweet	Sour	Oil	Gas	Water
Amine	LPG	Condensate	Air	Glycol

Other (Describe):

Inspection Interval

60 mo.

PSV Service Interval

(Determined by MIC in conjunction with Chief Inspector following guidelines of Conoco's Owner-User Inspection Program)

As Per Maxitrak

Reports reviewed and accepted by:

Mechanical Integrity Coordinator

Barry Throness

PESL Cert # 77

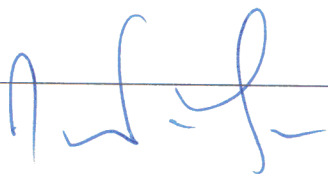
Date

AUG 10 2005

Fill out all forms as completely as possible. All information is important! Use back of sheets to record additional information or sketch if required. Copy of report to be filed by MIC at site, and copy sent to Chief Inspector

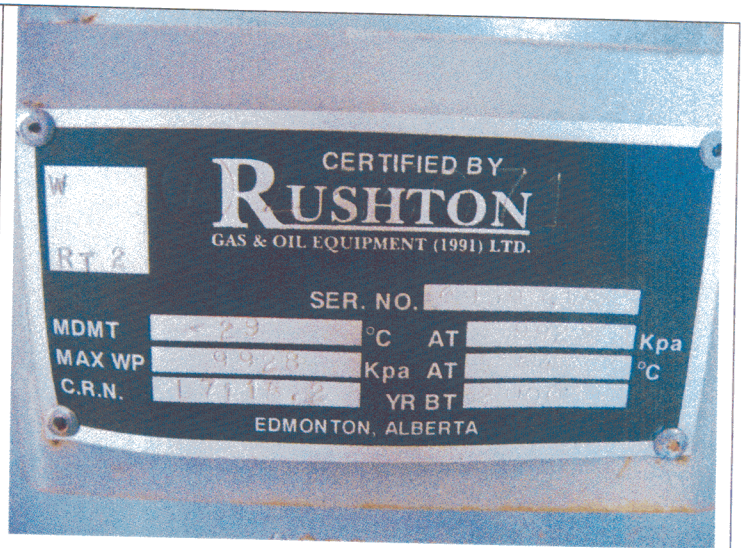
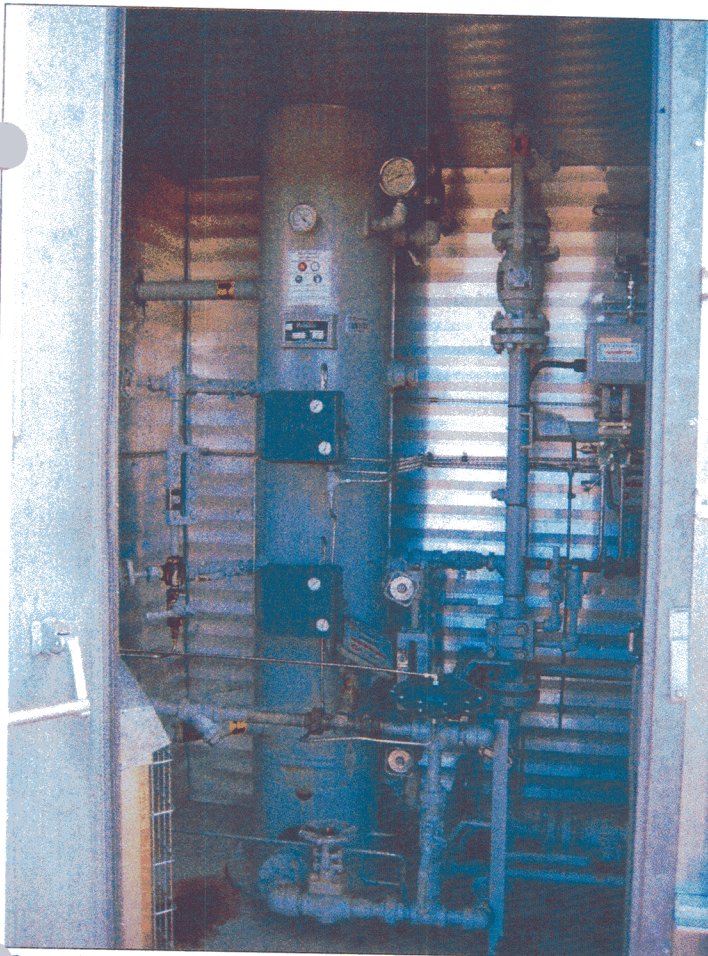
External Inspection Items	G	F	P	N/A	Comments
Insulation Verify sealed around manways, nozzles, no damage present, and there is no egress of moisture.	X				Roof seal inplace
External Condition Assess paint condition, areas peeling, record any corrosion, damage, etc (record location, size and depth of corrosion or damage)	X				Paint in excellent condition, no peeling blistering or fading
Leakage Record any leakage at flanges, threaded joints, weep holes on repads, etc.	X				None
Skirt/ Saddle Assess condition of paint, fire protection, concrete. Look for corrosion, buckling, dents, etc. Look at vessel surface area near supports. Verify no signs of leakage at attachment to vessel and attachment welds are acceptable. Ground wire attached?	X				Attached to Skid package via skirt Grounding cable firmly inplace to the skid package
Anchor Bolts Hammer tap to ensure secure. Look for cracking in treads or signs of deformation.	X				Anchor bolts firmly inplace
Concrete foundation Check for cracks, spalling, etc.				X	
Ladder / Platform Describe general condition, ensure support is secure to vessel, describe any hazards.				X	
Nozzle Assess paint, look for leakage, and ensure stud threads are fully engaged. Record any damage, deflection, etc. Are nozzles gusseted?	X				Paint intact, no deflections, no short bolting
Gauges Ensure gauges are visible, working, no leakage, and suitable for range of MAWP/ Temp.	X				Clean and clear, within the operational range of the vessel
External Piping Ensure pipe is well supported. All clamps, supports, shoes, etc. in place. Look for evidence of structural overload, deflection, etc. Paint condition, external corrosion?	X				Well supported, paint in good condition,
Valving Ensure no leaks are visible. Valves are properly supported and chained if necessary.	X				No weeping or leaking valves or fittings
PSV Ensure PSV is set at pressure at or below that of vessel. Discharge piping is same size as inlet to valve and is properly supported and routed. Ensure no block valves between psv and vessel or if there are they are locked open.	X				Located on upper shell – set at MAWP of vessel.
NDE methods Was UT/ MPI done on vessel (MI coordinator to review results)	X				UT corrosion survey carried out – No metal detected below nominal minus corrosion allowance.
Other					

Recommendations or corrective actions : Vessel is Fit for Service or describe corrective actions required)
(MIC to review corrective actions with Operations, discuss with Chief Inspector where necessary, and get remedial action implemented)



Inspected By: Michael Parsons

Date: March 2 - 2005



Overview Photo

Data Plate Photo

Inspected By: Michael Parsons Date: March 2 2005