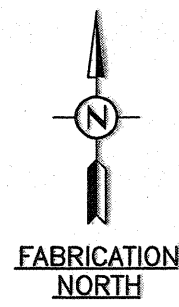
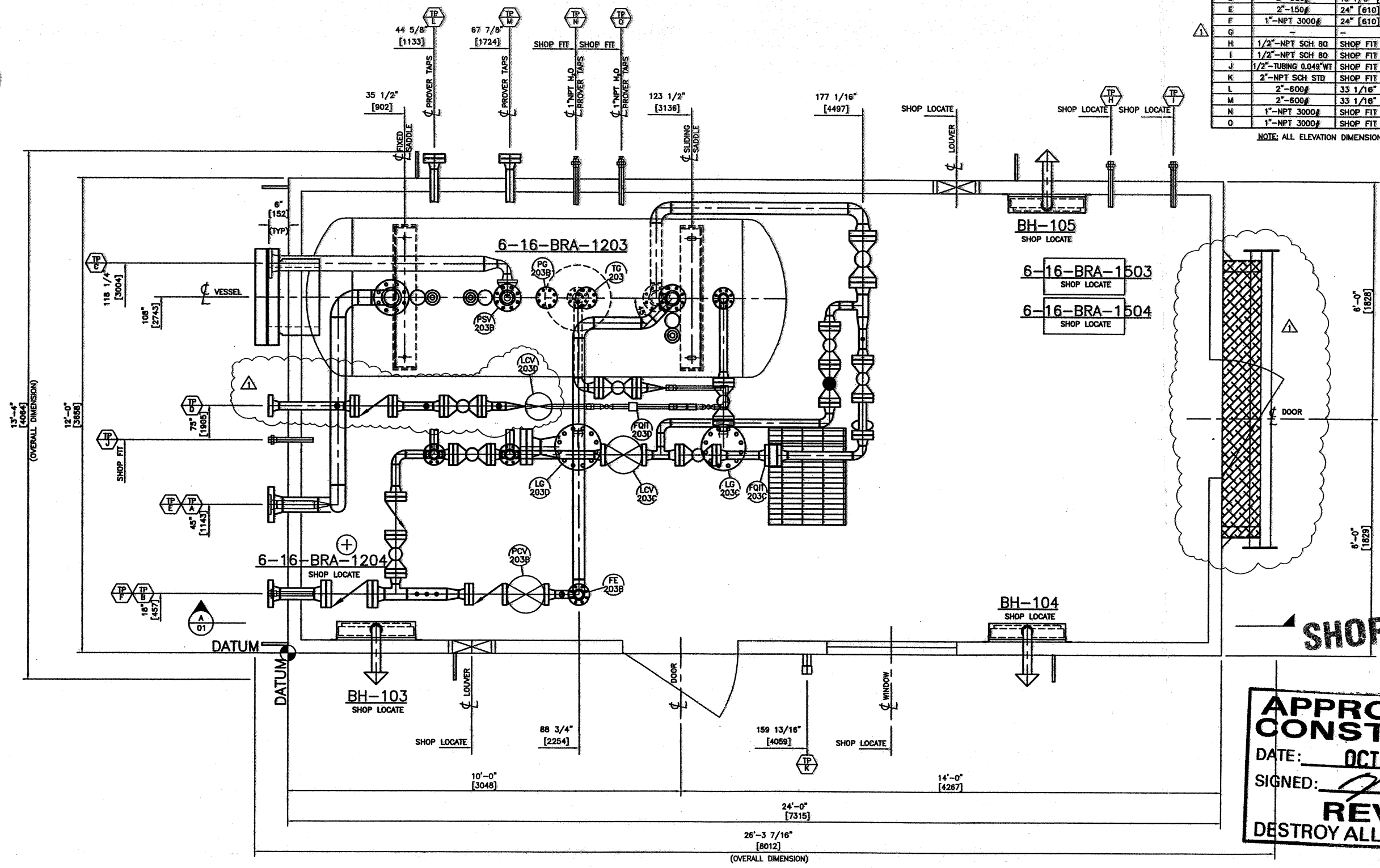


The information contained in this drawing is the confidential property of Platinum Energy Services Corp. No part thereof shall be reproduced or communicated to a third party without written authorization from Platinum Energy Services Corp.



TIE-IN SCHEDULE			
MARK	SIZE / RATING	ELEVATION	DESCRIPTION
A	4"-600#	9 5/16" [237]	INLET
B	3"-600#	9 5/16" [237]	OUTLET
C	4"-150#	139 3/16" [3535]	FLARE HEADER
D	2"-600#	10 1/8" [258]	PROD. WATER OUTLET
E	2"-150#	24" [610]	FUEL GAS OUT
F	1"-NPT 3000#	24" [610]	PURGE TO PIG LAUNCHER
G	-	-	-
H	1/2"-NPT SCH 80	SHOP FIT	METHANOL INLET
I	1/2"-NPT SCH 80	SHOP FIT	METHANOL INLET
J	1/2"-TUBING 0.049"WT	SHOP FIT	METHANOL OUTLET
K	2"-NPT SCH STD	SHOP FIT	FLOOR DRAIN CONNECTION
L	2"-600#	33 1/16" [840]	PROVER TAPS
M	2"-600#	33 1/16" [840]	PROVER TAPS
N	1"-NPT 3000#	SHOP FIT	PROVER TAPS
O	1"-NPT 3000#	SHOP FIT	PROVER TAPS

NOTE: ALL ELEVATION DIMENSIONS FROM TOP OF CHECKER PLATE.



PLAN VIEW

SHOP FOREMAN

APPROVED FOR CONSTRUCTION
 DATE: OCT 08 2008
 SIGNED: _____
REVISED
 DESTROY ALL PREVIOUS COPIES

- NOTES:
- 1.) PIPING CODE TO ANSI B31.3 (CURRENT EDITION).
 - 2.) DIMENSIONS ARE IN MILLIMETRES. ELEVATION DATUM = T.O. CHK'D PL. TAIL DIMENSIONS ARE FROM SKID PLAN DATUM. DIMENSIONS TO CENTERLINES U.N.O. (UNLESS NOTED OTHERWISE).
 - 3.) EQUIPMENT AND STRUCTURES EXTENDING PAST SKID SHIPPING LIMITS ARE REMOVED FOR SHIPPING.
 - 4.) LOUVER SIZE: 12"x18"
 - 5.) SHIPPING DIMENSIONS: 26'-3 7/16"x13'-4" (8012mm x 4064mm)
 - 6.) SHIPPING WEIGHT: 46000 lbs (20865 kg)

REV	DESCRIPTION	BY	DATE	CHK'D	APP'D
1	REVISED AS NOTED	BX	08/10/03	SL	RWS
0	ISSUED FOR CONSTRUCTION	SL	08/09/30	SL	RWS
C	REVISED AS NOTED	BX	08/09/23	SL	RWS
B	RE-ISSUED FOR APPROVAL	BX	08/09/16	SL	RWS
A	ISSUED FOR APPROVAL	BX	08/08/22	SL	RWS

ENGINEER'S STAMP

DRAWN BY: BX 08/08/20
 CHK'D BY: SL 08/08/20
 APP'D BY: RWS 08/08/20
 CAD REF: 18059-GA-01.dwg SCALE: 3/4"=1'-0"

PLATINUM
 Energy Services Corp.
 CALGARY, ALBERTA

CLIENT	HUSKY OIL OPERATIONS LIMITED c/o TARTAN ENGINEERING LTD.		
TITLE	48"ODx10'-0"S/S 1440 Psig (6-16-BRA-1203) GENERAL ARRANGEMENT - PLAN		
JOB NO.	18059	DRAWING NO.	18059-GA-01
REV			1