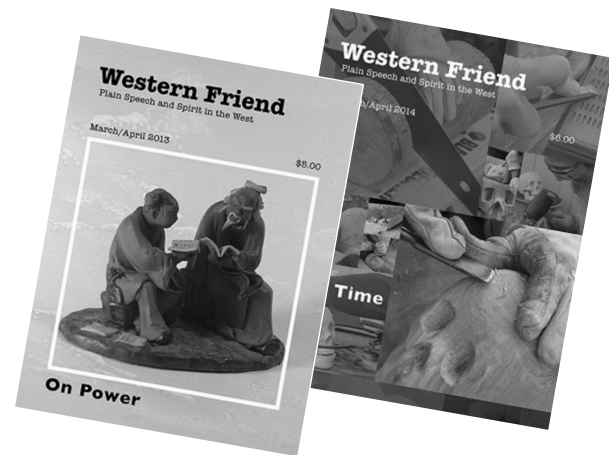


Founded in 1929 as “Friends Bulletin Corporation,” *Western Friend* has evolved with the times. With a new executive editor, Mary Klein, starting January 1st, *Western Friend's* board asked our readers through surveys and interest groups during the first half of 2013: What do Friends need and want from *Western Friend*? The messages we heard were clear:

- 1) continue the great work on the magazine,
- 2) expand *Western Friend's* online presence, and
- 3) expand the resources that *Western Friend* provides to our three yearly meetings in the West.

Guided by these ideas, we began redesigning our website. We hired Friend Brylie Oxley of Grass Valley Monthly Meeting to do this work. The new website should be ready to launch in 2014 and will include several new features: subscriber login for online access to all "current" articles, free public access to all "archived" articles (eventually going back to 1929!), community pages with virtual meeting rooms, community bulletin boards, and curated libraries of resources for First Day School, adult education, and other committees. We envision this new website as an online co-housing community for Friends in the West. We invite Friends to move in with us and help us fill the rooms there!

Western Friend's financial situation is stable. We budgeted for an operating loss of \$6,400 in FY 2013, anticipating disruptions from the transition to a new editor. In fact, we did better than budgeted, closing with a net loss of \$5,635. In FY 2013, the board also accepted a financial review of our FY 2012 books, conducted by CPA Richard Winkle. He found no cause for concern.



In 2014, *Western Friend* board members will be actively reaching out to monthly meetings and worship groups. We are creating a network of "Community Builders" to join us in our work of strengthening the bonds of faith, practice, and fellowship within local meetings and among them.

Each year, *Western Friend* reaches thousands of Friends through our publications, and hundreds more through in-person conversations. We invite you to join us in strengthening these connections.

Western Friend - FY 2013 Financial Statement

Balance Sheet

Equity	19,548
Liabilities	1,523
Net Assets	21,071

Profit and Loss Statement

Income

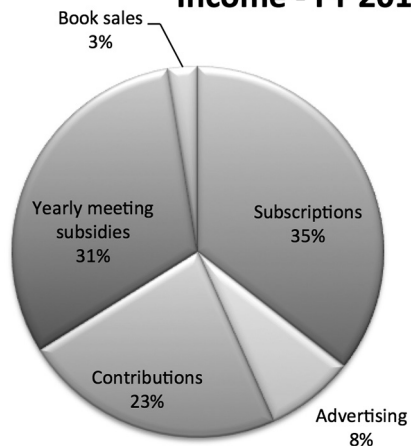
Subscriptions	28,410
Advertising	6,169
Contributions	18,261
Yearly meeting subsidies	25,000
Book sales	2,049
Total Income	79,889

Expenses

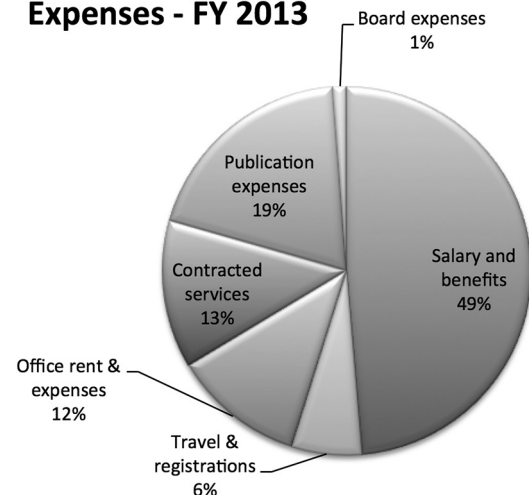
Salary and benefits	41,627
Travel and registrations	5,274
Office rent & expenses	9,916
Contracted services	11,076
Publication expenses	16,614
Board expenses	1,017
Total expenses	85,524

Net income	-5,635
-------------------	---------------

Income - FY 2013



Expenses - FY 2013



Western Friend

Through magazines, books, online communication, and face-to-face visitation, *Western Friend* builds practical and spiritual connections among Friends in the West.

In 2013, this service was especially notable in the impacts that our two newest books have had on Friends' meetings in the West. Marge Abbott continues to travel among Friends with her book, *To Be Broken and Tender*, using it as a resource in her workshops on spiritual transformation. Our newest book, *An Inner Strength*, edited by Kathy Hyzy, has also become a valuable resource for Quaker study groups, for examining the disproportionate impact that Quaker leadership has had in the public sphere.

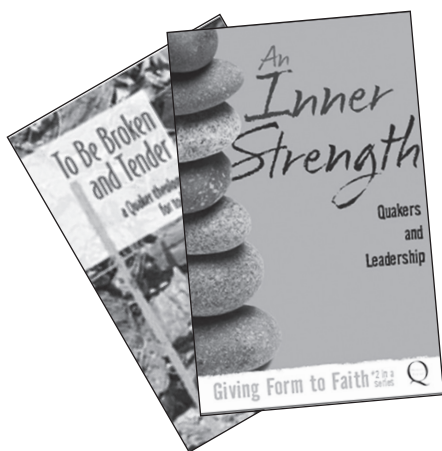
Support *Western Friend* today:

- Subscribe to the magazine.
- Buy books.
- Make a donation.
- Buy an ad for a Quaker organization/business.

Take any of these steps by going to our website or by regular mail. You can make contributions by check, by PayPal, or by making a donation of stock. Donations to *Western Friend*, a 501(c)3

nonprofit, are tax deductible.

Help sustain *Western Friend's* work of building community among Friends in the West.



The board of directors of *Western Friend* is drawn from the three yearly meetings that sustain it: Intermountain Yearly Meeting, North Pacific Yearly Meeting, and Pacific Yearly Meeting. Each yearly meeting appoints three directors, who serve three-year terms. The board sets direction for the 501(c)3 nonprofit organization, provides financial stewardship, and actively participates in building community among Friends in the West.

The executive editor is a member of the Religious Society of Friends and is responsible for all editorial, executive, and administrative functions of *Western Friend*.



2013 Board of Directors

Back row: Alan Mountjoy-Venning (NPYM), Jim Mangis (PYM), Mary Ann Percy (PYM), and Rick Seifert (NPYM). Front row: Judith Streit (IMYM), Leni Skarin (NPYM) Mary Klein, Executive Editor (PYM), and Solomon Smilack (IMYM). Not shown: Regina Renee (IMYM). One seat on the board was vacant (PYM).

Western Friend

305 N. California Avenue, Suite 203-B
Palo Alto, CA 94301-4105
650-318-1652

editor@westernfriend.org
www.westernfriend.org

